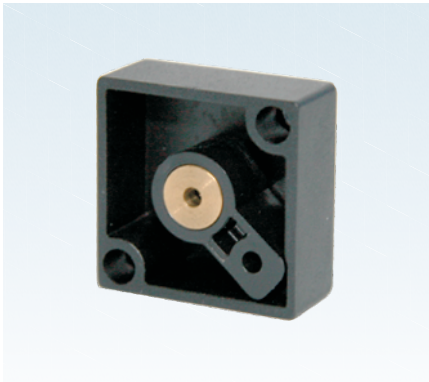


Preparation unit—Reverse Flow valve



GA315 Series



Product feature

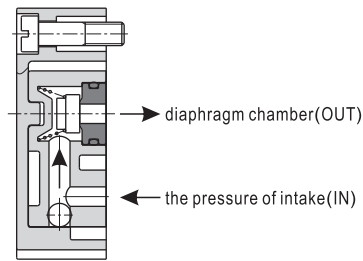
1. This reverse flow valve can be used with G series regulator and also can be ordered individually.
2. When it is used with G series regulator, one only needs to change the seal board in the back of regulator for the reverse flow valve. It is convenient to install and won't change the external dimension of regulator.

Applicable products

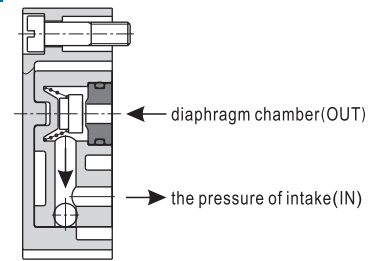
| Reflux valve type | Applicable products 's type |
|-------------------|-----------------------------|
| GA315 | GC200, 300, 400, 600 |
| | GFC200, 300, 400, 600 |
| | GFR200, 300, 400, 600 |
| | GR200, 300, 400, 600 |

Working principle

Normally

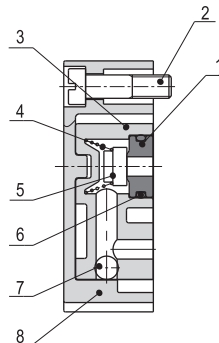


Exhaust



Normally, as the pressure of intake (IN) is higher than the set value (pressure of outlet), the reverse flow valve closes; if the pressure of intake (IN) is cut off and starts exhaust, reverse flow valve opens. The pressure of diaphragm chamber is exhausted from IN orifice. At this moment, the pressure of diaphragm chamber decreases and the diaphragm is pressed down by the force from adjusting spring to open valve. The pressure from outlet is exhausted from IN port.

Inner structure



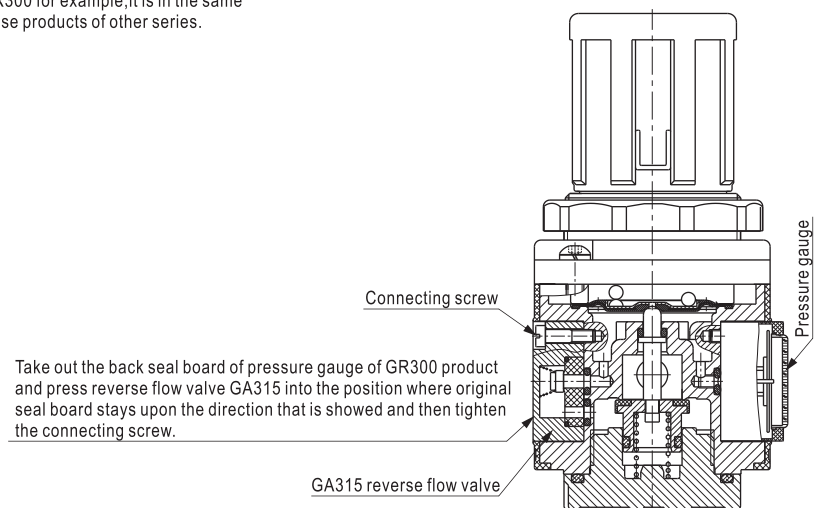
| No. | Item | Material |
|-----|---------------------------|----------------|
| 1 | Plug | Brass |
| 2 | Screw | Steel |
| 3 | Reverse flow valve's body | POM |
| 4 | Spring | SUS304 |
| 5 | Gasket | NBR |
| 6 | O-ring | NBR |
| 7 | Steel ball | SUS304 |
| 8 | Reflux valve's crust | Aluminum alloy |

Ordering code

When G series regulator is assembled with the reverse flow valve, the valve can be ordered together with the standard product. What needs to do is to add "-K" to the end of the ordering code of the standard product. Please refer to relevant content for more detailed order method.

Example for assemble the reflux valve

Take GR300 for example, it is in the same way to use products of other series.



Take out the back seal board of pressure gauge of GR300 product and press reverse flow valve GA315 into the position where original seal board stays upon the direction that is showed and then tighten the connecting screw.

